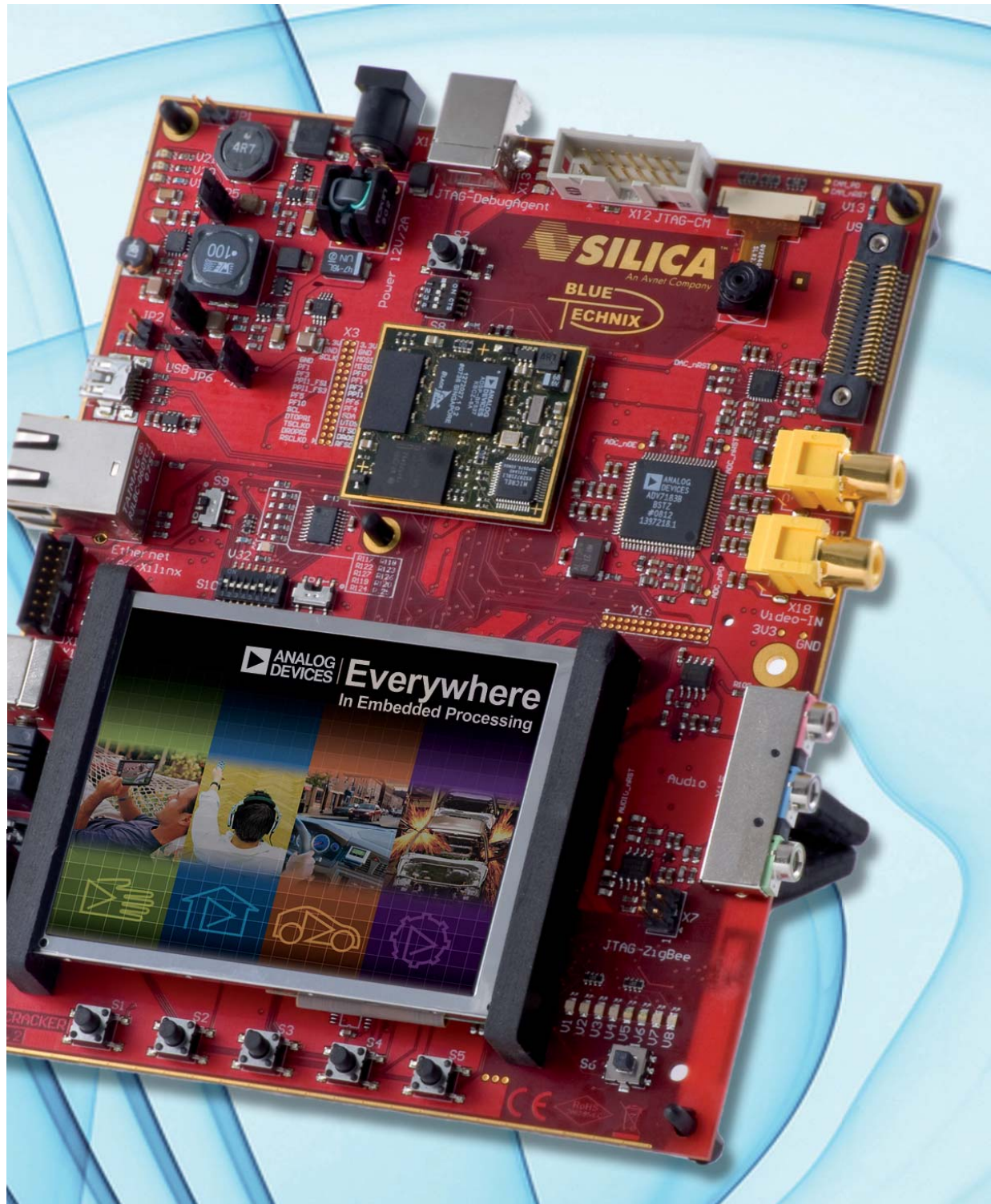


FireCracker

Quick Start Guide

www.silica.com



FireCracker Quick Start Guide

WARNINGS/SAFETY INSTRUCTIONS



Read carefully through the manual before getting started. This product is only for use within the mentioned power range and within the parameters mentioned in this manual. All paragraphs marked with this symbol are of high importance due to safe handling and use.



The Core Modules and development systems contain ESD (electrostatic discharge) sensitive devices. Electro-static charges readily accumulate on the human body and equipment and can discharge without detection. Permanent damage may occur on devices subjected to high-energy discharges. Proper ESD precautions are recommended to avoid performance degradation or loss of functionality. Unused Core Modules and Development Boards should be stored in the protective shipping package.



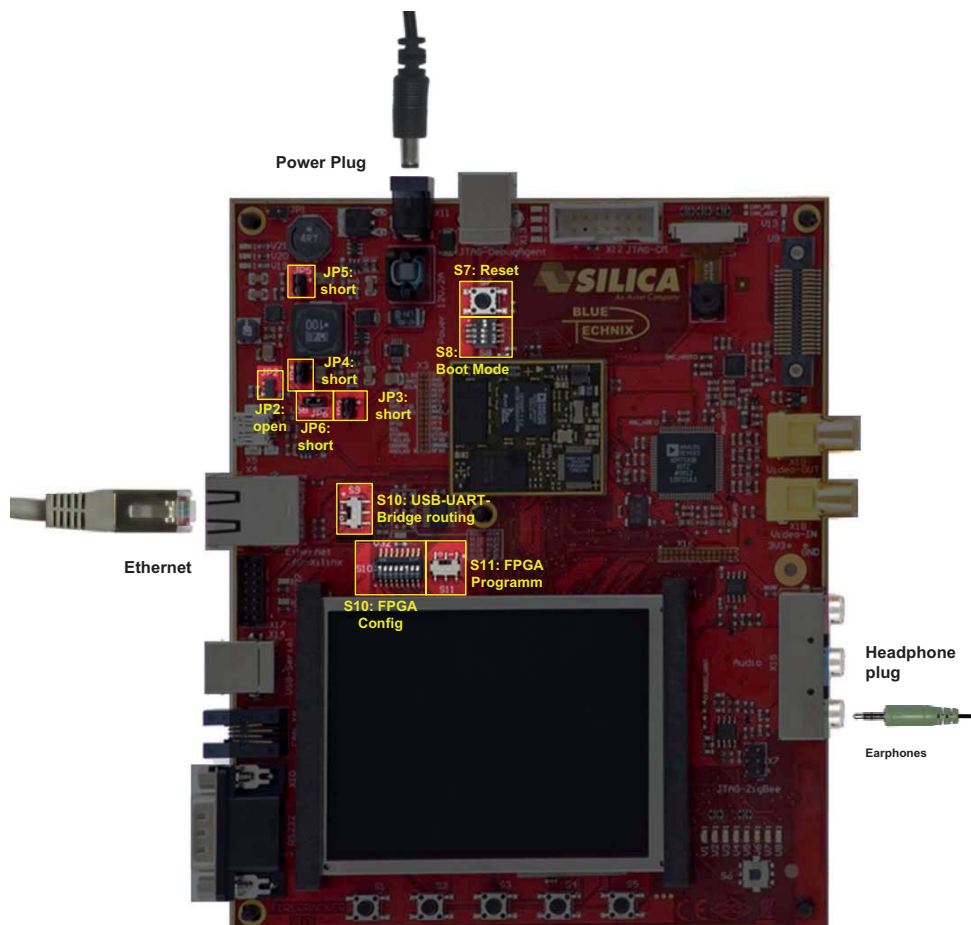
The device may not be disposed of with household rubbish. This appliance is labelled in accordance with European Directive 2002/96/EC concerning used electrical and electronic appliances (waste electrical and electronic equipment - WEEE).



The product has been designed and manufactured following the provisions of the European Directives, harmonized standards and other specifications as mentioned in the EC-Declaration of Conformity for this product.



All parts and components of the unit fulfil the RoHS requirements concerning the restriction of the use of certain hazardous substances in electrical and electronic equipment (EU Directive 2002/95/EC).



FireCracker Quick Start Guide

1 CONTENTS OF THE FIRECRACKER DEVELOPMENT PACKAGE

- 1 x FireCracker Baseboard (including Display and Camera)
- 1 x CM-BF537E Core Module
- 1 x Audio Headphones
- 1 x Ethernet Cable
- 1 x USB cable; Type A to Type B (2 x FireCracker BF537E-DA only)
- 1 x AC/DC Power Supply (220/110 V – 12 V @ 2,5 A) incl. Adapter
- FireCracker Support CD
- Analog Devices Visual DSP++ CROSS CORE Development Tools CD
- Getting Started with Blackfin Processors
- FireCracker Quickstart Folder
- Voucher
- SILICA Linecard

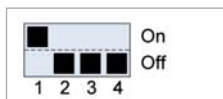
2 INITIAL BOARD SETUP



Follow the instructions below to start the first demonstration application on the FireCracker board. For additional demonstration programs and further installation procedures consult the Application Manual.

2.1 JUMPER AND SWITCH SETTINGS

1. Make sure the power supply jumpers JP3, JP4, JP5 and JP6 are set and jumper JP2 is open.
2. Select the correct boot mode on DIP switch S8.



3. Select the demonstration mode on DIP switch S10.



4. Set switch S9 to position 1, and switch S11 to position 0.
5. Connect the cables included in the FireCracker Package:
 - Power Supply Cable
 - Ethernet Module Cable
 - Head-Phones Jack

2.2 ENVIRONMENT SETUP

- Connect the ethernet connector to a PC by using the patch cable included in the package.
- Set the IP address of the PC to one within the subnet of the FireCracker board. The FireCracker uses the IP address **192.168.0.10**, subnet mask **255.255.255.0**.

3 DEMO APPLICATION

If you have successfully completed the steps described above, please power off/on the FireCracker board.

On the display you should see some debug messages. After 5 seconds the webcam example starts.

You can see a live-stream of the on-board camera. By pressing push button S1 the camera saves the actual image as a jpeg file.

Point your browser to **http://192.168.0.10/image.jpg** to see the saved image.

All trademarks and logos are the property of their respective owners. This document provides a brief overview only, no binding offers are intended. Avnet disclaims all representations, warranties and liabilities under any theory with respect to the product information, including any implied warranties of merchantability, fitness for a particular purpose, title and/or non-infringement, specifications, use, legal compliance or other requirements. Product information is obtained by Avnet from its suppliers or other sources deemed reliable and is provided by Avnet on an "AS IS" basis. No guarantee as to the accuracy or completeness of any information. All information is subject to change, modifications and amendments without notice.

Credits: We would like to thank the International Electrotechnical Commission (IEC) for permission to use the graphical symbols of IEC 60417: Graphical Symbols for use on Equipment.

SILICA OFFICES

AUSTRIA

Avnet EMG Elektronische Bauelemente GmbH
Diefenbachgasse 35/2 • A-1150 Wien
Phone: +43 1 86642-0 • Fax: +43 1 86642-350
wien@silica.com

BELGIUM

Avnet Europe NV/SA
Eagle Building • Kouterveldstraat 20B
B-1831 Diegem
Phone: +32 2 709 90 00 • Fax: +32 2 709 98 10
diegem@silica.com

CZECH REPUBLIC (SLOVAKIA)

Avnet s.r.o.
Argentinská 38/286 • CZ-170 00 Praha 7
Phone: +420 2 34091031 • Fax: +420 2 34091030
praha@silica.com

DENMARK

Avnet Nortec A/S
Ellekær 9 • DK-2730 Herlev
Phone: +45 43 22 80 10 • Fax: +45 43 22 80 11
herlev@silica.com

ESTONIA

Avnet Europe Comm. VA,
Laki 12 B 501 • 10621 Tallinn
Phone: +372 6833866 • Fax: +372 6833870
tallinn@silica.com

FINLAND

Avnet Nortec OY
Pihatormä 1B • FIN-02240 Espoo
Phone: +358 207 499200 • Fax: +358 207 499280
helsinki@silica.com

FRANCE

Avnet EMG France S.A.
6/8, rue Ambroise Croizat • ZAE Les Glaises
F-91127 Palaiseau Cedex
Phone: +33 1 64 47 29 29 • Fax: +33 1 64 47 00 84
paris@silica.com

Avnet EMG France S.A.
Parc Club du Moulin à Vent • Bât 40
33, rue du Dr. G. Lévy • F-69693 Vénissieux Cedex
Phone: +33 4 78 77 13 60 • Fax: +33 4 78 77 13 99
lyon@silica.com

Avnet EMG France S.A.
Technoparc • Bât E • 4, avenue des Peupliers
F-35510 Cesson Sévigné
Phone: +33 2 99 83 84 85 • Fax: +33 2 99 83 80 83
rennes@silica.com

Avnet EMG France S.A.
Parc de la Plaine 35 • avenue Marcel Dassault –
BP 5867 • F-31506 Toulouse Cedex 5
Phone: +33 5 62 47 47 60 • Fax: +33 5 62 47 47 61
toulouse@silica.com

GERMANY

Avnet EMG GmbH
Gruber Str. 60 C • D-85586 Poing
Phone: +49 8121 777 02 • Fax: +49 8121 777 531
muenchen@silica.com

Avnet EMG GmbH
Rudower Chaussee 12 a • D-12489 Berlin
Phone: +49 30 214882-0 • Fax: +49 30 214882-33
berlin@silica.com

Avnet EMG GmbH
Berliner Platz 9 • D-44623 Herne
Phone: +49 2323 96466-0 • Fax: +49 2323 96466-60
herne@silica.com

Avnet EMG GmbH
Wolfenbütteler Str. 22 • D-38102 Braunschweig
Phone: +49 531 22073-0 • Fax: +49 531 2207335
braunschweig@silica.com

Avnet EMG GmbH
Hessbruehlstr. 21c • D-70565 Stuttgart-Vaihingen
Phone: +49 711 78260-01 • Fax: +49 711 78260-200
stuttgart@silica.com

Avnet EMG GmbH
Carl-Zeiss-Str. 14 - 18 • D-65520 Bad Camberg
Phone: +49 6434 90 46 0 • Fax: +49 6434 90 46 33
badcamberg@silica.com

HUNGARY

Avnet EMG
Montevideo u. 2/B • H-1037 Budapest
Phone: +36 1 43 67215 • Fax: +36 1 43 67213
budapest@silica.com

ITALY

AVNET EMG ITALY SPA
Via Manzoni 44, I-20095 Cusano Milanino MI
Phone: +39 02 660 921 • Fax: +39 02 66092 333
milano@silica.com

AVNET EMG ITALY SPA
Via Longhin, 83 • I-35129 Padova (PD)
Phone: +39 049 8073689 • Fax: +39 049 773464
padova@silica.com

AVNET EMG ITALY SPA
Via Panciatichi, 40 • I-50127 Firenze (FI)
Phone: +39 055 4360392 • Fax: +39 055 431035
firenze@silica.com

AVNET EMG ITALY SPA
Via Scaglia Est, 144 • I-41100 Modena (MO)
Phone: +39 059 351300 • Fax: +39 059 344993
modena@silica.com

AVNET EMG ITALY SPA
Via Zoe Fontana, 220 • I-00131 Roma Tecnocittà
Phone: +39 06 4131151 • Fax: +39 06 4131161
roma@silica.com

NETHERLANDS

Avnet B.V.
Takkebijsters 2 • NL-4817 BL Breda
Phone: +31 (0)76 57 22 700 • Fax: +31 (0)76 57 22 707
breda@silica.com

NORWAY

Avnet Nortec AS
Hagaløkkveien 7 • Postboks 63 • N-1371 Asker
Phone: +47 6677 3600 • Fax: +47 6677 3677
asker@silica.com

POLAND (LATVIA/LITHUNIA)

Avnet Em Sp. Z oo.
ul. Woloska 18 • PL-02-675 Warszawa
Phone: +48 22640 2351 • Fax: +48 22640 2354
warszawa@silica.com

PORTUGAL

ATLANTIPOWER, LDA
Candal Parque • R. 28 de Janeiro, 350
P- 4400-335 Vila Nova de Gaia
Phone: +351 223 77 95 02/04 • Fax: +351 223 77 95 03
porto@silica.com

RUSSIA (BELARUS)

Korovinskoye Chaussee 10 • Building 2
Office 25 • RU-127486 Moscow
Phone: +7 495 9371268 • Fax: +7 495 9372166
moscow@silica.com

SLOVENIA (BULGARIA, CROATIA, BOSNIA, MACEDONIA, SERBIA/MONTENEGRO, ROMANIA)

Dunajska c. 159 • SLO-1000 Ljubljana
Phone: +386 (0)1 560 9750 • Fax: +386 (0)1 560 9878
ljubljana@silica.com

SPAIN

Avnet Iberia S.A.U.
C/Chile,10 • plta. 2ª, ofic 229 • Edificio Madrid 92
E-28290 Las Matas (Madrid)
Phone: +34 91 372 71 00 • Fax: +34 91 636 97 88
madrid@silica.com

Avnet Iberia S.A.U.
C/Mallorca, 1 al 23 • 2ª plta.1A • E-08014 Barcelona
Phone: +34 93 327 85 30 • Fax: +34 93 425 05 44
barcelona@silica.com

Avnet Iberia S.A.U.
Plaza Zabalgane, 12 • Bajo Izqda.
E-48960 Galdàcano (Vizcaya)
Phone: +34 944 57 27 77 • Fax: +34 944 56 88 55
bilbao@silica.com

SWEDEN

Avnet Nortec AB
Esplanaden 3D • BOX 1830 • S-171 27 Solna
Phone: +46 8 587 461 00 • Fax: +46 8 587 461 01
stockholm@silica.com

SWITZERLAND

Avnet EMG AG
Bernstrasse 392 • CH-8953 Dietikon
Phone: +41 43 322 49 49 • Fax: +41 43 322 49 50
dietikon@silica.com

TURKEY (GREECE, EGYPT)

Bayar Cad. Gülbahar Sok. Nr. 17/111-112
TR- 34742 Kozytagi/Istanbul
Phone: +90 216 361 89 58 • Fax: +90 216 361 89 27
istanbul@silica.com

UKRAINE

Avnet
14, Vasilkivska str. • 03040 Kiev, Ukraine
Phone: +380 44 4962226 • Fax: +380 44 4962227
kiev@silica.com

UNITED KINGDOM/IRELAND

Avnet EMG Ltd.
Avnet House • Rutherford Close
Meadway Stevenage, Herts • SG1 2EF
Phone: +44 (0)1438 788310 • Fax: +44 (0)1438 788262
stevenage@silica.com